



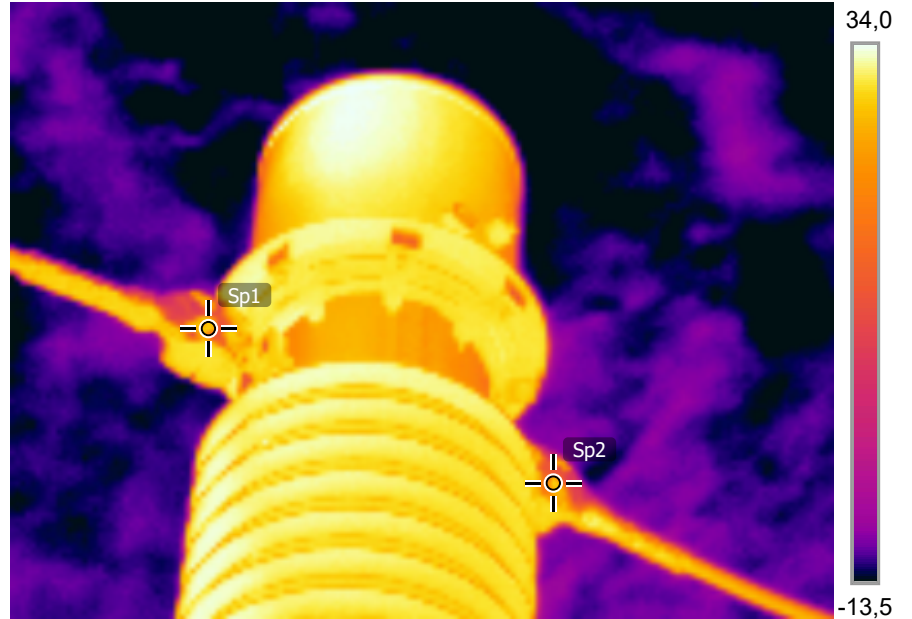
Measurements

| | |
|-----|---------|
| Sp1 | 29,8 °C |
| Sp2 | 30,2 °C |

Parameters

| | |
|------------|-------|
| Emissivity | 0.95 |
| Ref. temp. | 20 °C |

2018/09/25 15:37:59



IR_0655.jpg

FLIR E40

49008571

2018/09/25 15:37:59

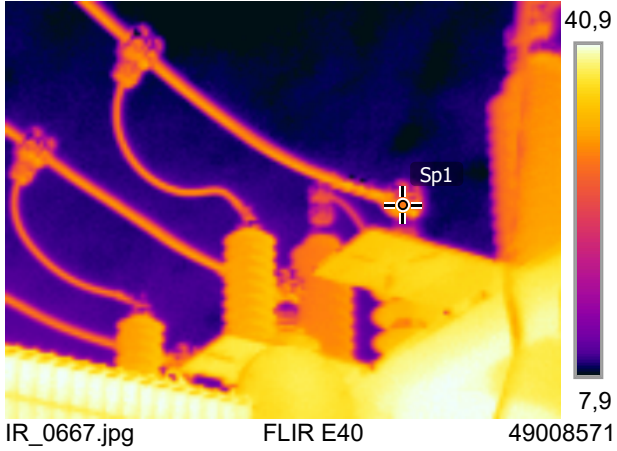


DC_0656.jpg

Note:

- All 132KV CT, VT and CB connections look good with no hot connections.

2018/09/25 15:39:26



Measurements

| | |
|-----|---------|
| Sp1 | 30,4 °C |
|-----|---------|

Parameters

| | |
|-------------|-------|
| Emissivity | 0.95 |
| Refl. temp. | 20 °C |

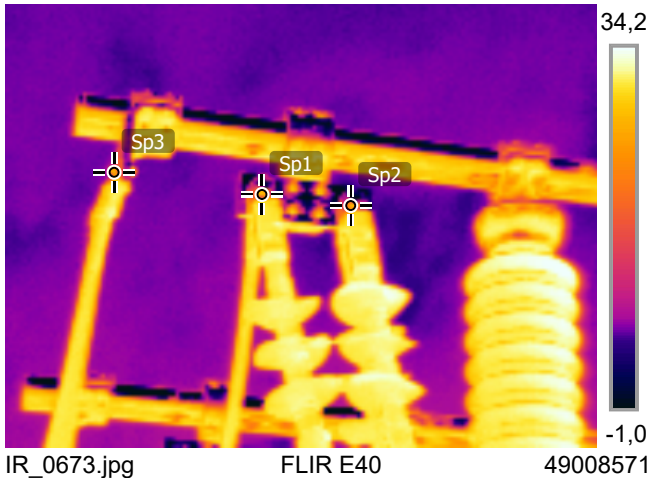
2018/09/25 15:39:26



Note:

- All 22KV connections on TRFR 1 and 2 look good with no hot connections.

2018/09/25 15:39:52



Measurements

| | |
|-----|---------|
| Sp1 | 28,6 °C |
| Sp2 | 28,4 °C |
| Sp3 | 28,0 °C |

Parameters

| | |
|-------------|-------|
| Emissivity | 0.95 |
| Refl. temp. | 20 °C |

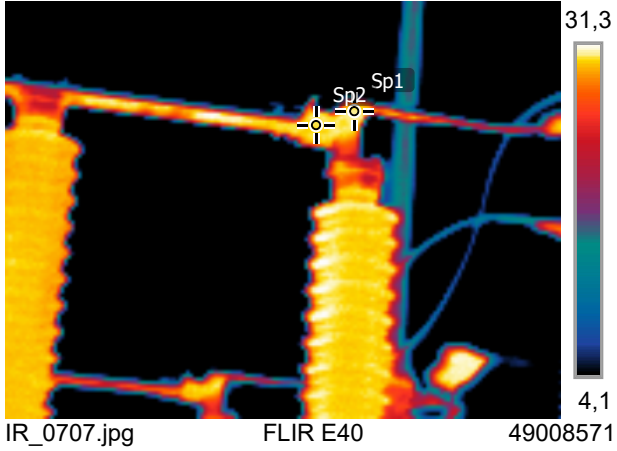
2018/09/25 15:39:52



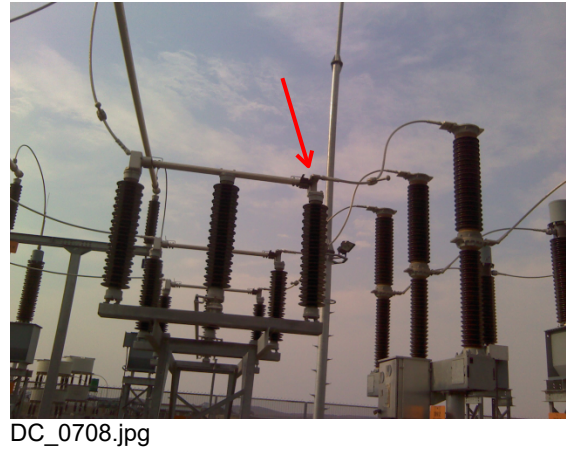
Note:

- All 22KV cable connections on TRFR 1 and 2 are in good order with no hot connections.

2018/09/25 15:49:30



2018/09/25 15:49:30



Measurements

| | |
|-----|---------|
| Sp1 | 30,5 °C |
| Sp2 | 30,3 °C |

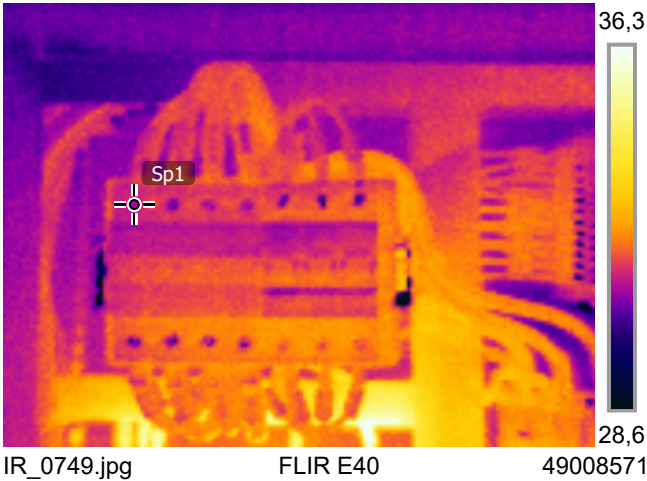
Parameters

| | |
|------------|-------|
| Emissivity | 0.95 |
| Ref. temp. | 20 °C |

Note:

- All 132KV link connections look good with no hot connections.

2018/09/25 15:54:54



2018/09/25 15:54:54



Measurements

| | |
|-----|---------|
| Sp1 | 31,1 °C |
|-----|---------|

Parameters

| | |
|------------|-------|
| Emissivity | 0.95 |
| Ref. temp. | 20 °C |

Note:

- All connections in LV Yard box are in good order with no hot connections.
- No further actions are required.